

VIB 360 WORLD TORQUESENSE

Beyond Power : Complete Shaftline Intelligence

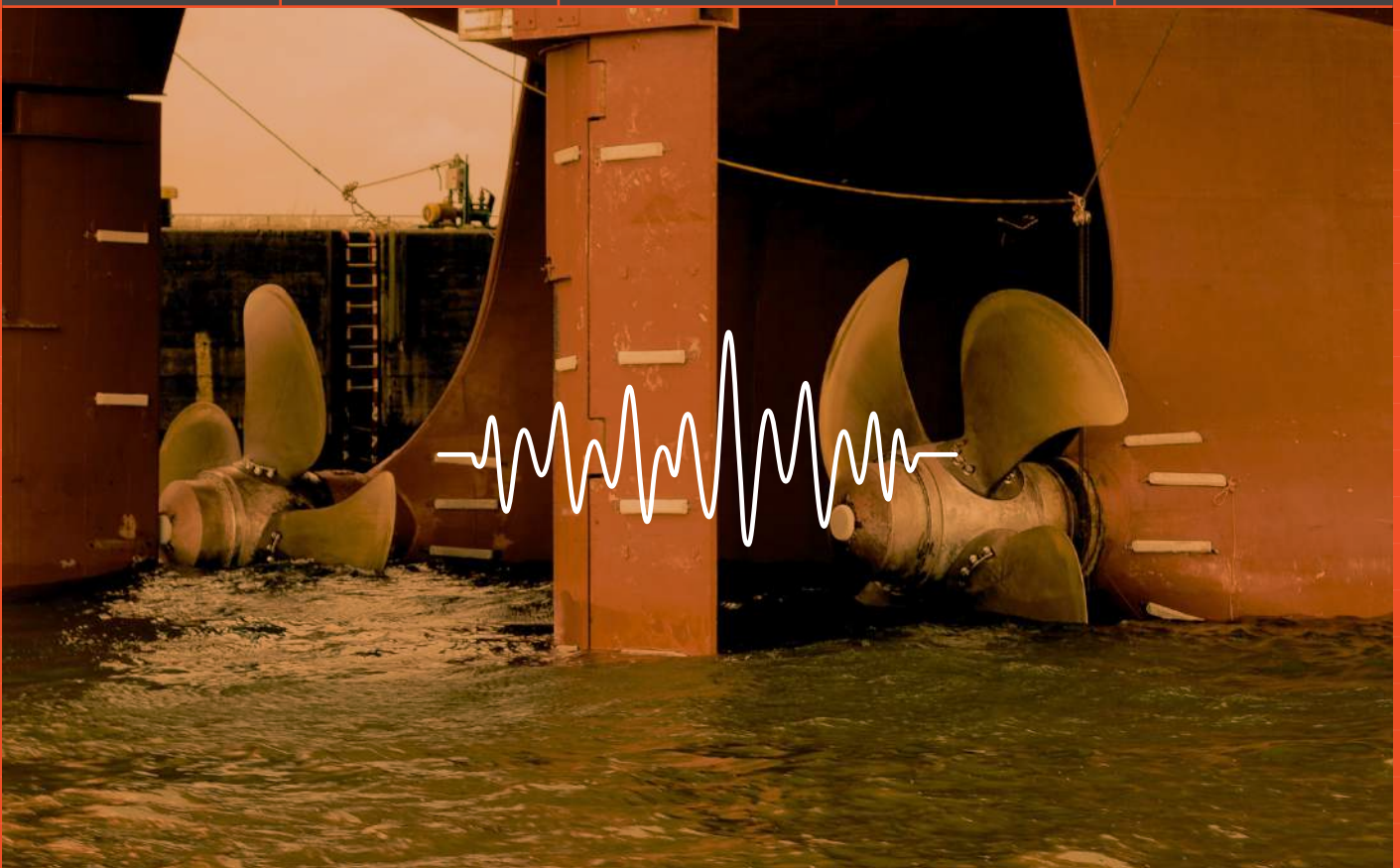
Shaft
Power

ShaPoLi

Propeller
Efficiency

Stern Tube
Health

Shaft Line
Health



TORQUESENSE

Data That Drives Profitability

Benefits

- **Accurate Power Measurement**
- **Save Fuel, Measure Propeller Inefficiency** : Differentiates fouling from blade damage
- **Optimise Propeller Cleaning** : Use data for decision making
- **Support Compliance** : EEXI, CII and Digital Reporting

Options

- **Monitor Stern Tube Wear Down**
- **Monitor Shaft Intermediate Bearing Health**
- **Measure Transient Events** : Shock, Load Fluctuations on the shaft
- **Integrate Fuel Mass Flow Meter** : Get SFC readings online
- **Integrates with our Smart Engine Analytics Solution** : Gives detailed insights into Propulsion Health





**VIB 360
WORLD**

TORQUESENSE

Power Measured Simply

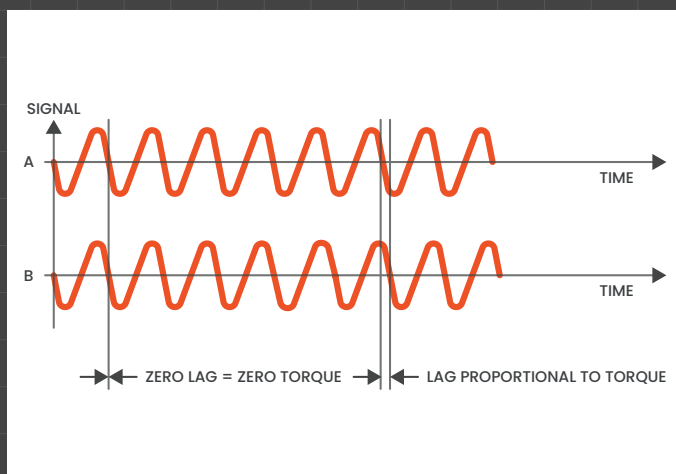
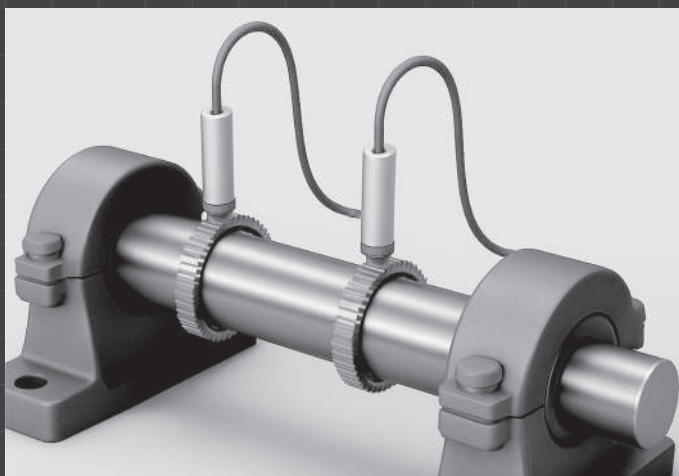
Just two no-contact sensors. No slip rings. No shaft-mounted electronics. No strain gauges.

Only pure, reliable data - with accuracy and repeatability you can trust.

- **Retrofit-ready in hours, not days.**
- **Built tough for the harshest marine environments.**
- **Maintenance-free. Hassle-free. Stress-free.**

Our Shaft Power Measurement System proves that the smartest solutions are often the simplest.

Simplicity that works. Performance that lasts.



Where It Fits

Ocean
Going
Vessels

Harbour
Tugs

Ferries

Offshore
Supply
Vessels

Naval
Craft

Fishing
Vessels

Retrofit-ready | Class-compliant | Engineered for harsh marine duty

WWW.VIB360WORLD.COM

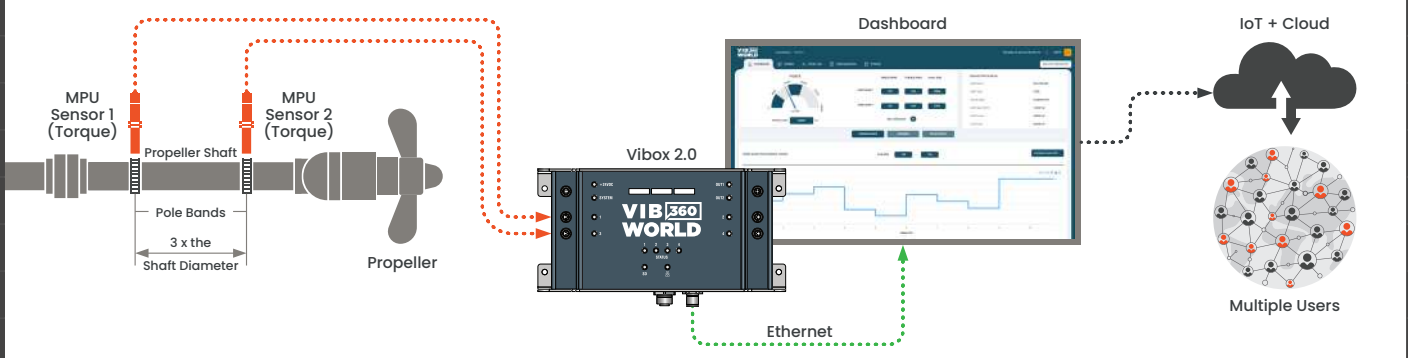
 dataVIB
impedance

VIB360 WORLD

TORQUESENSE

Traditional Shaft Power Systems stop at Torque and RPM. We go further.

Our system delivers deep diagnostic intelligence across the entire shaft line - capturing torsional vibrations, analysing harmonic frequencies, mechanical behaviour, and energy transfer with accuracy that enables smarter decisions at sea and onshore.



System Specifications

- Shaft Power : 300kW to 90,000kW
- Shaft RPM : 30 to 3000 RPM
- Shaft Diameter : 130mm to 800mm
- Shaft Construction : Hollow / Solid
- Read Outs / Results : Once in Every 3 min

Communication Ports

- 1 Gigabit Ethernet Port (10/100/1000 Mbps)
- 1 CAN 2.0B Port up to 1 Mbps
- 1 RS232 (EIA-232) Serial Port up to 230 kbps
- 1 RS485 (EIA-485) Serial Port up to 1 Mbps

Hardware Specifications

- Operating Temperature : -40° to +75° C
- RAM : 1GB DDR3L
- Internal Memory : 64GB
- Processor : 8GB eMMC
- Sensor Model : E16S40
- Sensor Size : M16 X 1.5
- Sensor Operating Temperature : -40° to +125° C

Talk to us how we can unlock your shaftline hidden data.

impedance dataVIB

📍 SIÈGE SOCIAL

80 domaine de Montvoisin 91400 Gometz la Ville France

☎ +33 1 69 35 15 25

✉ support-VIB360@impedance.fr

WWW.VIB360WORLD.COM

dataVIB
impédance